

Concertino

Bassoon



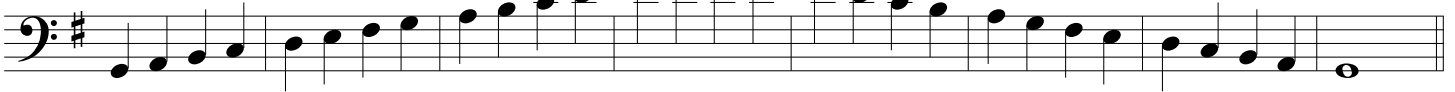
greater twin cities youth symphonies

♩ = 100

C major



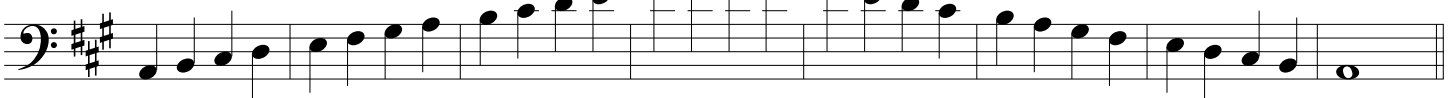
G major



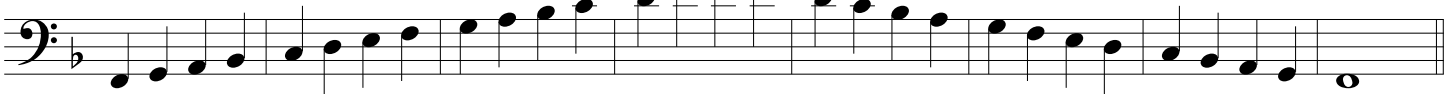
D major



A major



F major



Bb major



Eb major



These scales are for reference only; students may perform their scales in the format and octave of their choice for auditions.

Concertino - Bassoon

Chromatic scale

The image displays a chromatic scale for the bassoon, written in bass clef. The scale is presented in three lines of music, each containing four measures. The first line starts on G2 and ascends chromatically to G#3. The second line starts on G#3 and descends chromatically to G2. The third line starts on G2 and descends chromatically to G1. The notes are: Line 1: G2, A2, B2, C3, C#3, D3, D#3, E3, E#3, F3, F#3, G3. Line 2: G#3, F#3, F3, E3, E#3, D3, D#3, C3, C#3, B2, B#2, A2, A#2, G#2, G2. Line 3: G2, F#2, F2, E2, E#2, D2, D#2, C2, C#2, B1, B#1, A1, A#1, G1.