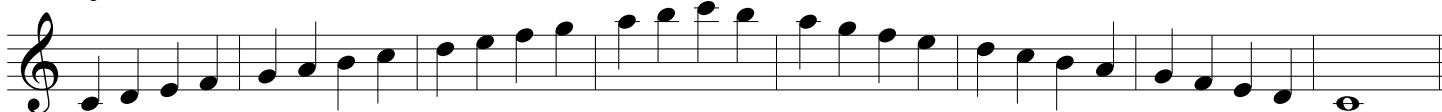


Concertino

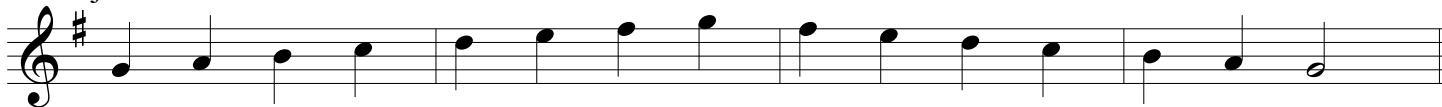
Oboe

♩ = 100

C major



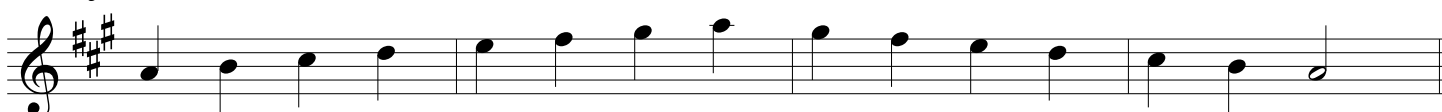
G major



D major



A major



F major



Bb major



Eb major



These scales are for reference only; students may perform their scales in the format and octave of their choice for auditions.

Concertino - Oboe

Chromatic scale

The image displays a chromatic scale for the oboe, written in treble clef across three staves. The scale is composed of 12 notes, ascending and then descending. The notes are: C4, C#4, D4, D#4, E4, E#4, F4, F#4, G4, G#4, A4, and A#4. The first staff contains the first four notes (C4 to F#4). The second staff contains the next four notes (G4 to B4). The third staff contains the final four notes (C5 to A#4), ending with a double bar line. The notes are written as quarter notes on a five-line staff.